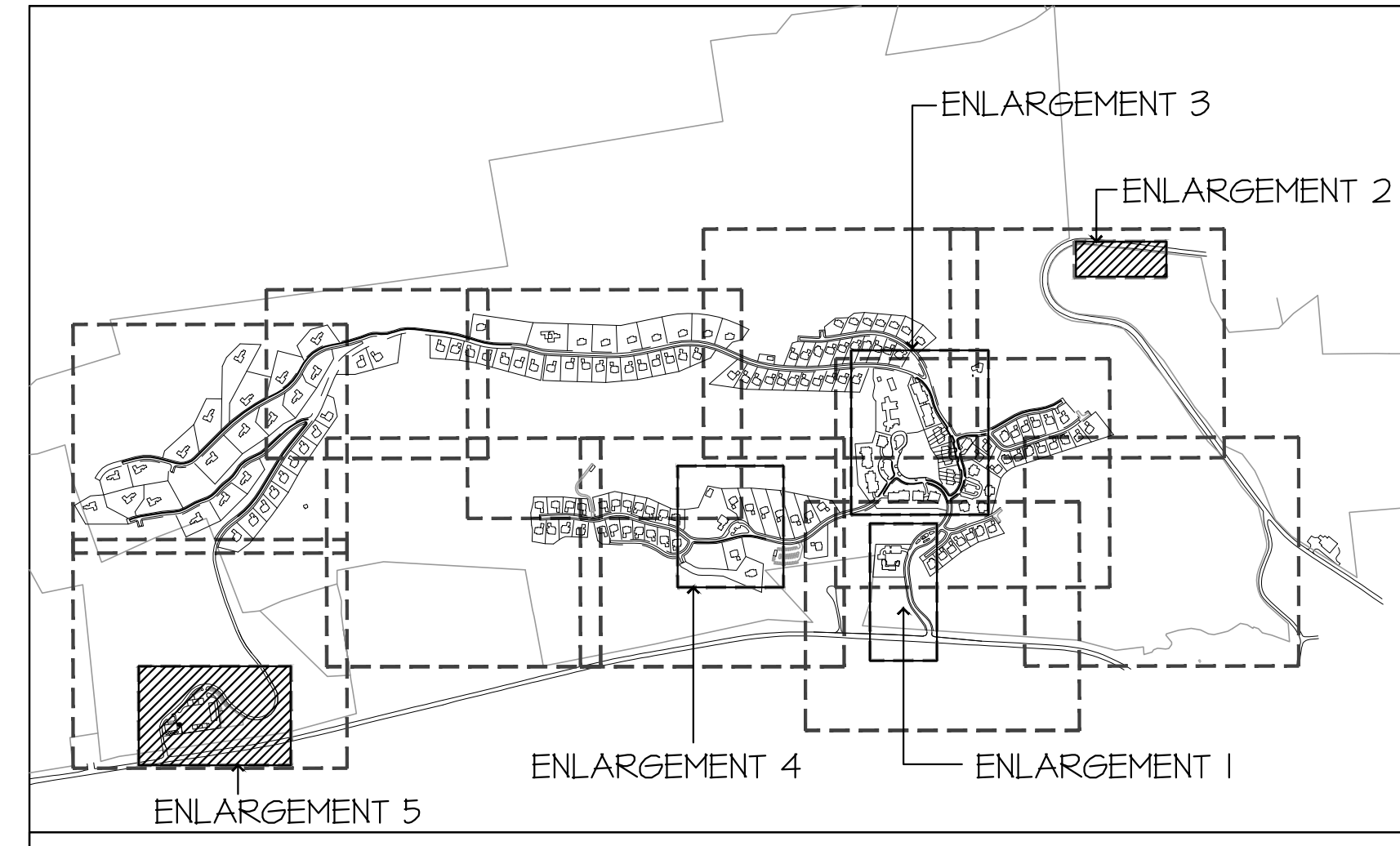


KEY PLAN



GENERAL NOTES:

1. ALL GOLF LANDSCAPE SHOWN FOR ILLUSTRATIVE PURPOSES ONLY. REFER TO CIVIL ENGINEER AND GOLF COURSE ARCHITECT'S PLANS FOR LAYOUT AND DESIGN.
2. DRAWINGS ARE FOR DESIGN INTENT ONLY.
3. STRUCTURAL DESIGN OF ALL WALLS/ STAIRS AND OTHER HARDSCAPE ELEMENTS IS THE RESPONSIBILITY OF THE STRUCTURAL ENGINEER AND CIVIL ENGINEER.
4. COORDINATE WITH LIGHTING CONSULTANT PRIOR TO BEGINNING ANY WORK.
5. IRRIGATION PLANS SHALL BE PROVIDED BY CLIENT.
6. SEE CIVIL ENGINEER'S DRAWINGS FOR ROAD, PARKING, AND TRAFFIC DESIGN.
7. SEE TYPICAL RESIDENTIAL LOT ENLARGEMENT PLANS FOR PLANTING DESIGN INTENT WITHIN RESIDENTIAL DEVELOPMENT AREAS.

GRADING AND DRAINAGE DISCLAIMER:
GRADING AND DRAINAGE INFORMATION SHOWN IS FOR REFERENCE ONLY. SEE CIVIL DRAWING FOR COMPLETE DRAINAGE AND GRADING PLANS, WALL HEIGHTS, FINISH GRADES AND DRAIN LOCATIONS.

LEGEND

	PROPERTY LINE
	PARCEL LINE
	SETBACK LINE
	ROAD RIGHT-OF-WAY
	EXISTING TREE LINE (LOCATION IS APPROXIMATE - TO BE VERIFIED IN FIELD)

ABBREVIATIONS:

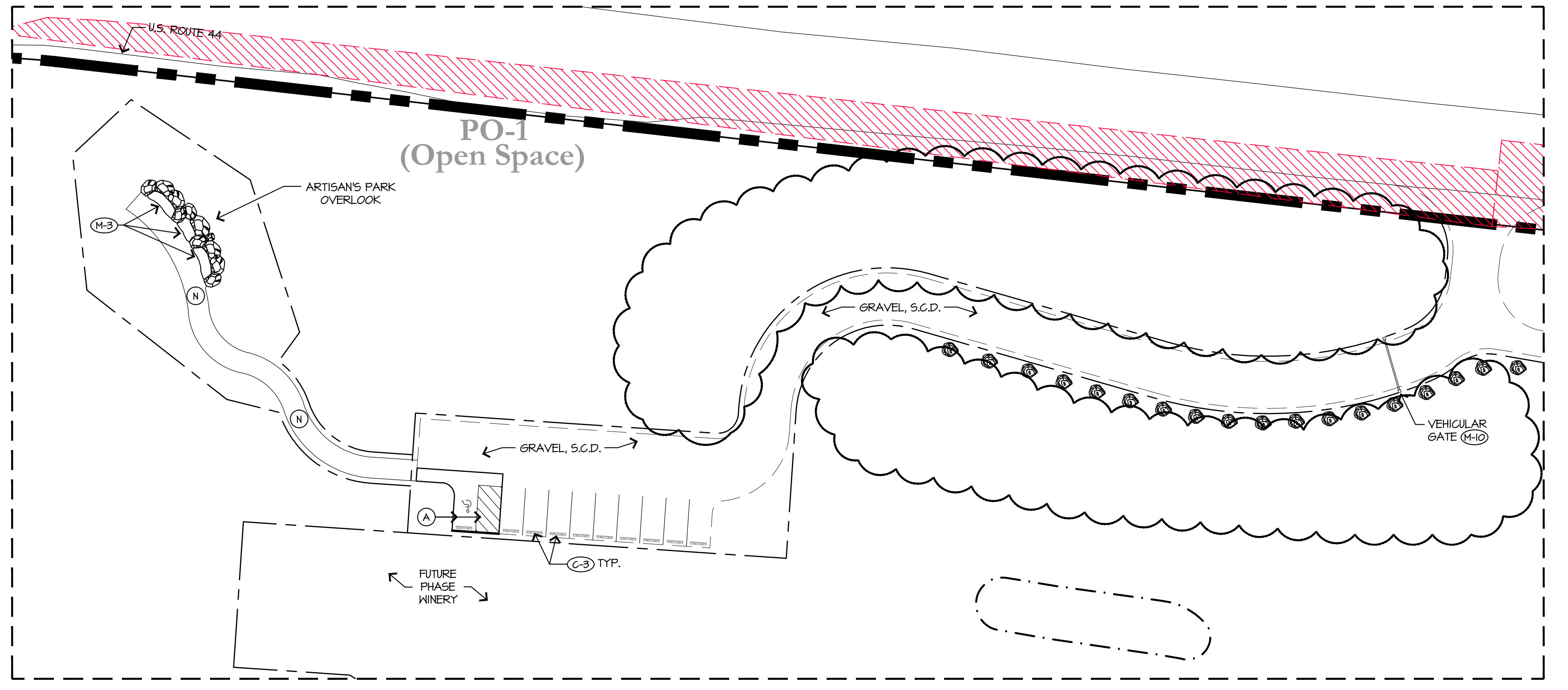
(P4)	M-1	G-1	H-3	ST-3	VE-1	I
------	-----	-----	-----	------	------	---

MATERIALS SCHEDULE SYMBOL (TYP.)

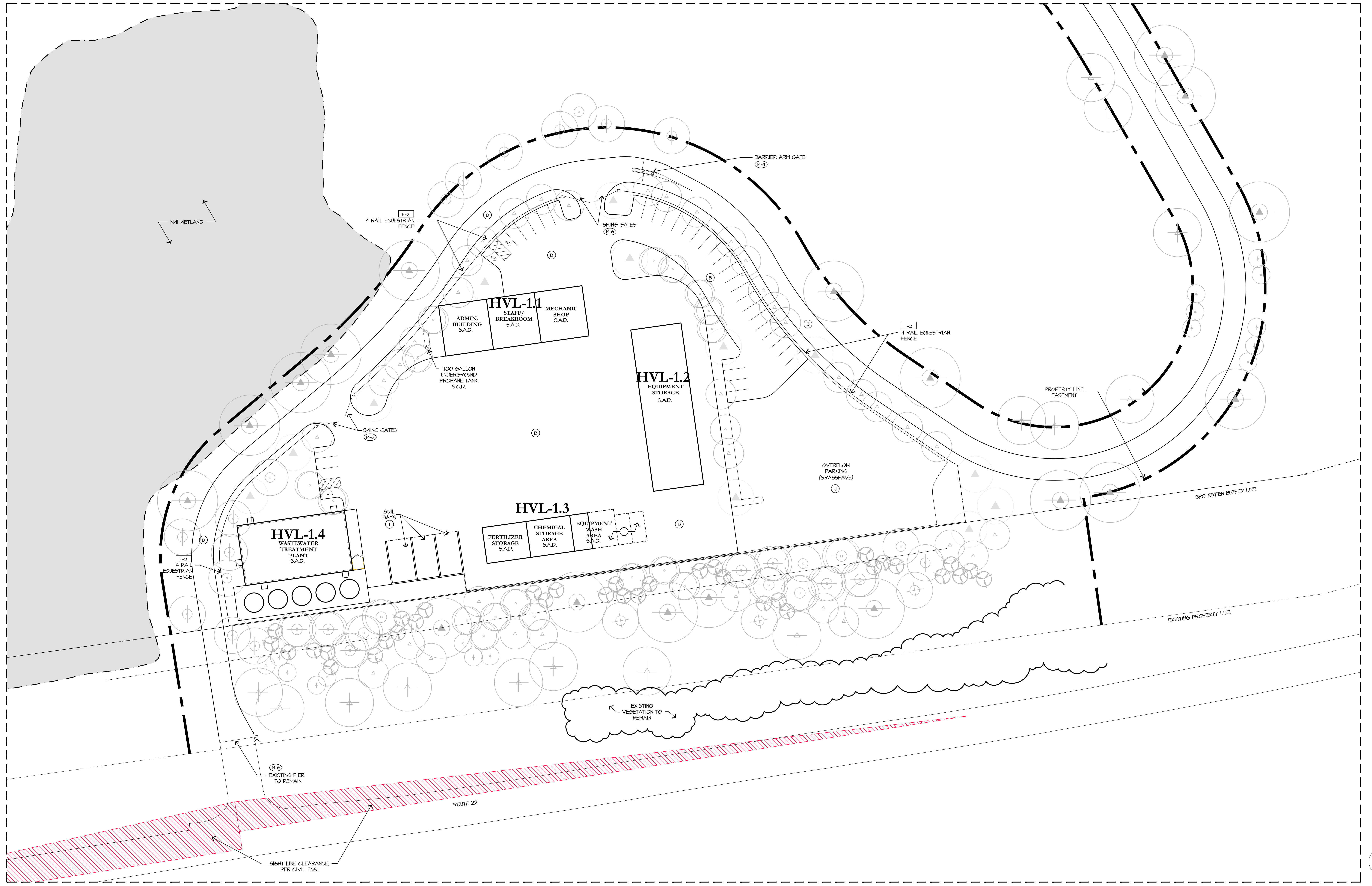
ABBREVIATIONS:

GF.F.F. = GARAGE FINISHED FLOOR ELEVATION	S.C.D. = SEE CIVIL ENGINEER'S DRAWINGS
L.F.F.E. = LIVING FINISHED FLOOR ELEVATION	S.W.M. = STORM WATER MANAGEMENT
W.F.F.E. = WALK-OUT FINISHED FLOOR ELEVATION	TYP. = TYPICAL
N.I.C. = NOT IN CONTRACT	P.A. = PLANTING AREA
NYDEC = NEW YORK DEPARTMENT OF ENVIRONMENTAL CONSERVATION	V.I.F. = VERIFY IN FIELD
NYS = NEW YORK STATE	
S.A.D. = SEE ARCHITECTURAL DRAWINGS	

ARTISAN'S PARK OVERLOOK ENLARGEMENT



MAINTENANCE FACILITY ENLARGEMENT



NOT FOR CONSTRUCTION

HART HOWERTON
10 Erie Ave. Suite 200, New York, NY 10016
Tel: 212.682.5431 Fax: 212.461.1748
Email: NY@hart-howerton.com

SILO RIDGE
PHASE 1 SITE PLAN SUBMISSION
Armenia, New York
Dutchess County

DATE ISSUE

03/09/2014	PH 1 SITE PLAN
05/02/2014	SITE PLAN REV
06/19/2014	SITE PLAN REV
01/08/2015	SITE PLAN REV

REVISIONS

NO.	DATE	REVISION
01	01/08/2015	REVISION #1
02	04/09/2015	REVISION #2

MATERIALS PLAN ENLARGEMENTS

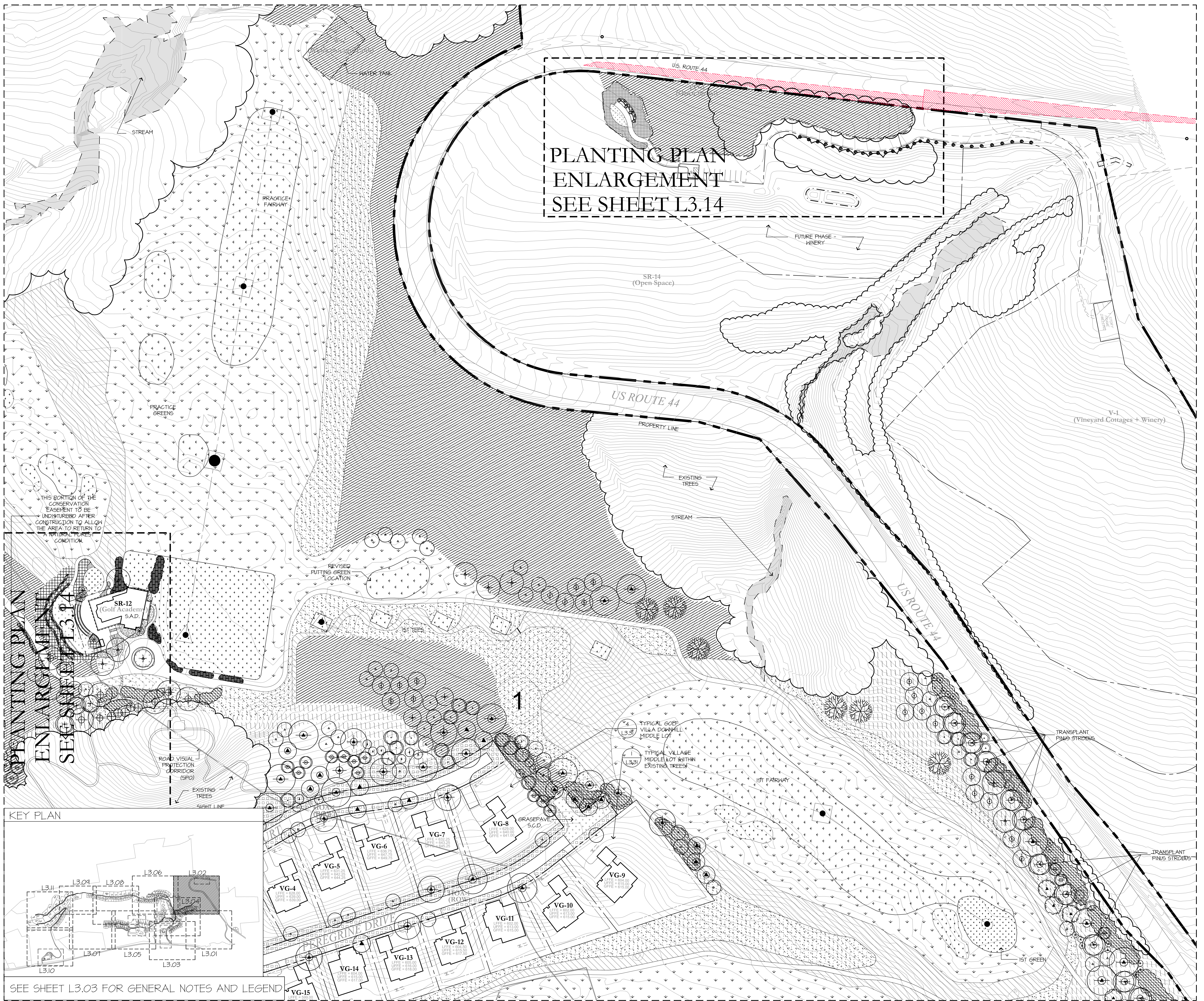
PROJECT #: 13-507
DRAWN BY: JHS
CHECKED BY: SIB
DRAWING NO.: L1.14

Jonathan Sokler, 11/2012/12:07, Arden Inn and Cottages 640 CAD (Sheet) Sheet S01.L1.14 Material: Plotting... Page: Setup: rws, H:14.0, W:11.0, PRINT: Canvas (820x1100) PCL&C

MATCHLINE-SEE SHEET L3.06

MATCHLINE-SEE SHEET L3.04

Jonathan Soder, EIT 2012-12-207, Warren Inc and Company LLC CAD (Shed/Shell/Sheet Set) L3.02 Planning Planting - Page Stage: use, Hatched, Per Scale: 1:1, 1/8"=1'-0" (PRINT) Canon R2200 100% PCL5



OPENING PLAN
ENLARGEMENT
SEE SHEET L3.14

KEY PLAN

SEE SHEET L3.03 FOR GENERAL NOTES AND LEGEND

PLANTING PLAN
ENLARGEMENT
SEE SHEET L3.14

NOT FOR CONSTRUCTION
 SILO RIDGE
 PHASE 1 SITE PLAN SUBMISSION
 Amenia, New York
 Dutchess County

HART HOWERTON
 100 West 40th Street, New York, NY 10018
 TEL: 212.685.5431 FAX: 212.246.1768
 Email: NY@hart-howerton.com

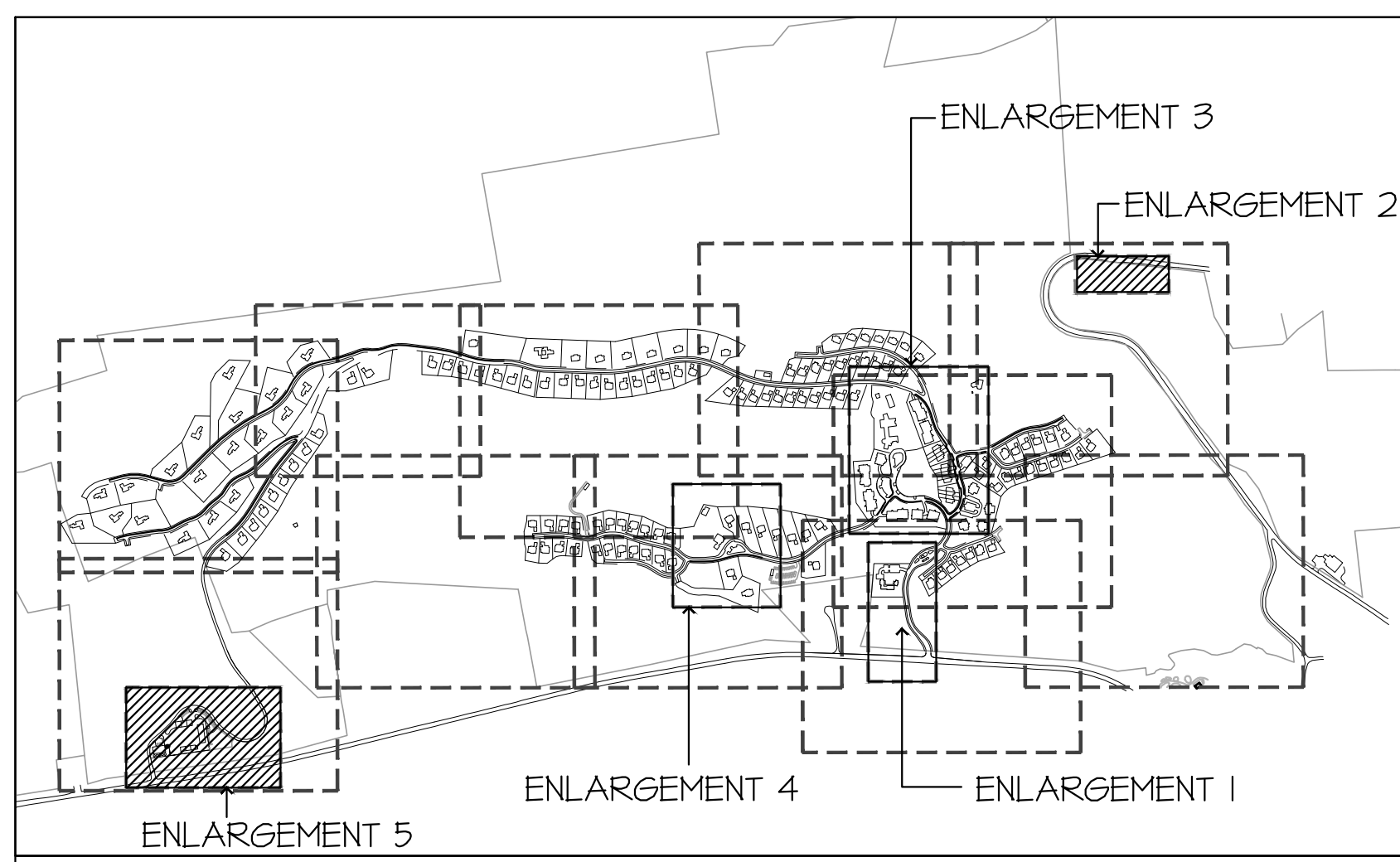
DATE: 03/09/2014
 ISSUE: 12
 DATE: 02/24/2014
 SITE PLAN REV
 DATE: 01/08/2013
 SITE PLAN REV

REVISIONS
 NO. DATE DESCRIPTION
 1 01/09/2013 REVISION #2

PROJECT #: 13-507
 DRAWN BY: JZ
 CHECKED BY: SIB
 DRAWING NO: L3.02

PLANTING PLAN
 TILE 2

KEY PLAN



LEGEND

—	PROPERTY LINE	—RVZ—	RIDGE LINE VISUAL PROTECTIVE ZONE
- - -	PARCEL LINE	- - -RVC-	ROAD VISUAL PROTECTION CORRIDOR
- - -	SETBACK LINE	- - -TVC-	TRAIL VISUAL PROTECTION ZONE
- - -	ROAD RIGHT-OF-WAY		
- - -	STREAM CORRIDOR		

ABBREVIATIONS:
 GFFE = GARAGE FINISHED FLOOR ELEVATION
 LFFE = LIVING FINISHED FLOOR ELEVATION
 WFFE = WALK-OUT FINISHED FLOOR ELEVATION
 N.L.G. = NOT IN CONTRACT
 NYDEC = NEW YORK DEPARTMENT OF ENVIRONMENTAL CONSERVATION
 NYS = NEW YORK STATE

EXISTING TREE LINE (LOCATION IS APPROXIMATE - TO BE VERIFIED IN FIELD)
 PROPOSED TREE SYMBOLS & PLANT MIXES (HATCHES) - SEE PLANTING SCHEDULE

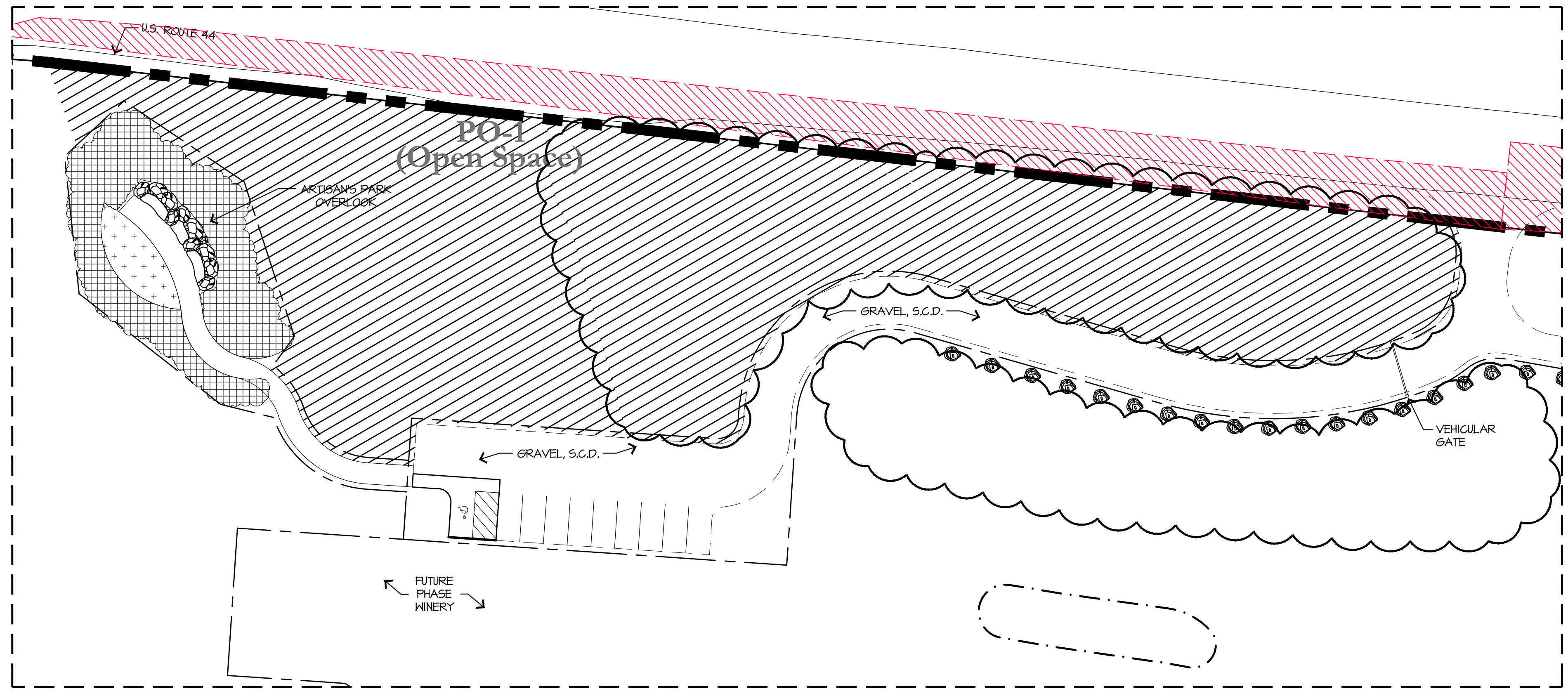
S.A.D. = SEE ARCHITECTURAL DRAWINGS
S.C.D. = SEE CIVIL ENGINEER'S DRAWINGS
S.W.M. = STORM WATER MANAGEMENT
TYP. = TYPICAL
P.A. = PLANTING AREA
V.I.F. = VERIFY IN FIELD

GENERAL NOTES:

- ALL GOLF LANDSCAPE SHOWN FOR ILLUSTRATIVE PURPOSES ONLY. REFER TO CIVIL ENGINEER AND GOLF COURSE ARCHITECT'S PLANS FOR LAYOUT AND DESIGN.
- DRAWINGS ARE FOR DESIGN INTENT ONLY.
- STRUCTURAL DESIGN OF ALL WALLS/ STAIRS AND OTHER HARDSCAPE ELEMENTS IS THE RESPONSIBILITY OF THE STRUCTURAL ENGINEER AND CIVIL ENGINEER.
- COORDINATE WITH LIGHTING CONSULTANT PRIOR TO BEGINNING ANY WORK.
- IRRIGATION PLANS SHALL BE PROVIDED BY CLIENT.
- SEE CIVIL ENGINEER'S DRAWINGS FOR ROAD, PARKING, AND TRAFFIC DESIGN.
- SEE TYPICAL RESIDENTIAL LOT ENLARGEMENT PLANS FOR PLANTING DESIGN INTENT WITHIN RESIDENTIAL DEVELOPMENT AREAS.

GRADING AND DRAINAGE DISCLAIMER:
 GRADING AND DRAINAGE INFORMATION SHOWN IS FOR REFERENCE ONLY. SEE CIVIL DRAWING FOR COMPLETE DRAINAGE AND GRADING PLANS, WALL HEIGHTS, FINISH GRADES AND DRAIN LOCATIONS.

ARTISAN'S PARK OVERLOOK ENLARGEMENT



MAINTENANCE FACILITY ENLARGEMENT



NOT FOR CONSTRUCTION
 SILO RIDGE
 PHASE 1 SITE PLAN SUBMISSION
 Amenia, New York
 Dutchess County

HART HOWERTON
 101 Erie Ave., Suite 200, Newburgh, NY 12550
 TEL: 212.485.5431 FAX: 212.485.1748
 Email: NY@hhowerton.com

DATE ISSUE

03/09/2014	PH 1 SITE PLAN
04/22/2014	SITE PLAN REV
07/19/2014	SITE PLAN REV
01/08/2015	SITE PLAN REV

REVISIONS

NO.	DATE	ISSUE
01/08/2015	REVISION #1	
04/09/2015	REVISION #2	

PLANTING PLAN
 ENLARGEMENT

PROJECT #: 13-507
 DRAWN BY: VALUE
 CHECKED BY: VALUE
 DRAWING NO.: L3.14

Jonathan Sotter, EIT 2012-12-20P, Arden Inn and Cottages LLC CAD (Sheet) Sheet SCL1.23 (Landscape Planning) - Page Setup: user: JHart, Plot Scale: 1:1, \\HP-PRINT-Canon-R2200-3000-PCLE

DECIDUOUS AND EVERGREEN TREES

NO. OF PLANTS	BOTANICAL NAME	COMMON NAME	SPEC. SIZE	NOTES
34	ABIES BALSAMEA	BALSAM FIR	10'-12' HT.	
87	ABIES CONCOLOR	CONCOLOR FIR	10'-12' HT.	
34	ACER RUBRUM 'BOYHALL'	BOYHALL RED MAPLE	3' CAL.	
343	ACER RUBRUM	RED MAPLE	3' CAL.	USE A BLEND OF THE FOLLOWING: ACER X FREEMANII 'AUTUMN BLAZE' (USE IN LOCATIONS CLOSEST TO ROAD DUE TO SALT TOLERANCE), ACER RUBRUM 'OCTOBER GLORY', AND ACER RUBRUM (STRAIGHT SPECIES)
175	ACER SACCHARUM	SUGAR MAPLE	3' CAL.	USE MIX OF 'GREEN MOUNTAIN', 'LEGACY' AND 'BONFIRE'
19	ACER SACCHARUM SPECIMEN	SUGAR MAPLE	8' CAL.	
64	BETULA LENTA	BLACK BIRCH	3' CAL.	
65	BETULA NIGRA	RIVER BIRCH	3' CAL.	USE SOME 'HERITAGE' CULTIVARS IN FOCAL AREAS
40	BETULA POPULIFOLIA 'WHITESPIRE'	WHITESPIRE BIRCH	2' CAL.	CLUMP FORM
21	CARYA GORDIFORMIS	BITTERNUT HICKORY	3' CAL.	
36	CARYA OVATA	SHAGBARK HICKORY	3' CAL.	
5	CERCIDIPHYLLUM JAPONICUM	KATSURA TREE	3' CAL.	
10	GLEDITSIA TRIACANTHOS 'MORAIN'	MORAIN HONEY LOCUST	6' CAL.	
42	FRAXINUS PENNSYLVANICA 'PATMORE'	GREEN ASH	3' CAL.	
34	LARIX LARCINA	AMERICAN LARCH	3' CAL.	
15	LIRIODENDRON TULIPIFERA	TULIP TREE	2' CAL.	
43	LIQUIDAMBAR STYRACIFLUA 'MORAIN'	SWEETGUM	3' CAL.	
152	NYSSA SYLVATICA	BLACK TIFELO	2' CAL.	MIX OF MULTI-TRUNK AND STANDARD TRUNK FORMS
13	XYDENDRUM ARBOREUM	SOURWOOD	2' CAL.	
168	PICEA GLAUCA	WHITE SPRUCE	10'-12' HT.	
134	PINUS STROBUS	EASTERN WHITE PINE	10'-12' HT.	
82	QUERCUS ALBA	WHITE OAK	3' CAL.	
107	QUERCUS BICOLOR	SWAMP WHITE OAK	3' CAL.	
150	QUERCUS COCCINEA	SCARLET OAK	3' CAL.	
10	QUERCUS MACROCARPA	BUR OAK	3' CAL.	
60	QUERCUS PALUSTRIS	PIN OAK	3' CAL.	
125	QUERCUS RUBRA 'MAXIMA'	RED OAK	3' CAL.	
23	SALIX NIGRA	BLACK HULLOW	2' CAL.	
87	SASSAFRAS ALBIDUM	SASSAFRAS	2' CAL.	
6	TILIA AMERICANA 'REDMOND'	REDMOND BASSWOOD	3' CAL.	
24	THUJA OCCIDENTALIS	EASTERN WHITE CEDAR	7'-9' HT.	
35	PICEA GLAUCA 'DENSATA'	BLACK HILLS SPRUCE	7'-9' HT.	

ORNAMENTAL TREES

NO. OF PLANTS	BOTANICAL NAME	COMMON NAME	SPEC. SIZE	NOTES
81	AMELANCHIER ARBOREA 'AUTUMN BRILLIANCE'	DOWNY SERVICEBERRY	1/2' CAL.	
87	AMELANCHIER CANADENSIS	SERVICEBERRY	1/2' CAL.	CLUMP FORM
31	CERCIS CANADENSIS 'ALBA'	WHITE BLOOMING EASTERN REDBUD	1/2' CAL.	
57	CHAEMAECYPARIS THYOIDES	ATLANTIC WHITE CYPRESS	1/2' CAL.	
25	CORNUS KOUSA	KOUSA DOGWOOD	1/2' CAL.	
40	HAMAMELIS VIRGINIANA	COMMON WITCH HAZEL	1/2' CAL.	
8	PRUNUS SERRULATA 'KWANZAN'	KWANZAN FLOWERING CHERRY	1/2' CAL.	MATCHING SPECIMENS

GOLF COURSE ZONES

HABITAT CLASSIFICATION	REMARKS
GREEN TEE SHORT ROUGH BUNKERS FAIRWAY	GOLF COURSE - IN PLAY
	NATIVE FESCUE 6" TO 1'-0" HT.
	P1 - SHORELINE GROUP
	P2 - NATIVE SHORT GRASS 1'-0"
	P3 - NATIVE TALL GRASS > 1'-0"
	GT - GOLF TRANSITION GRASSES
	FOREST HABITAT
	AQUATIC HABITAT

NOTE: GOLF DESIGN AND LAYOUT PER GOLF COURSE ARCHITECT. SEE HABITAT MANAGEMENT PLAN (HMP) FOR GOLF PLANTING INFORMATION AND LAYOUT, SHOWN HERE FOR ILLUSTRATIVE PURPOSES ONLY.

NOTE: PLANTING QUANTITIES ARE FOR REFERENCE ONLY. IT IS THE RESPONSIBILITY OF THE CONTRACTOR TO VERIFY ALL PLANT QUANTITIES FROM SYMBOLS/HATCHES SHOWN ON PLANTING PLANS. ANY SUBSTITUTIONS/ADDITIONS/SUBTRACTIONS OF PLANT MATERIAL IS TO BE APPROVED BY THE LANDSCAPE ARCHITECT IN WRITING ONLY. VERBAL SUBSTITUTIONS/ADDITIONS/SUBTRACTIONS ARE NOT ACCEPTABLE.

ABBREVIATIONS:
CAL. = CALIPER
GAL. = GALLON

AMENITY AREAS - PLANT MIXES

MIX NAME	TOTAL SQ. FT.	BOTANICAL NAME	COMMON NAME	SPEC. SIZE	SPACING	NOTES
CELL A: LAWN SEED MIX	139,874	40% FESTUCA ARUNDINACEA 'SHENANDOACH II' 40% FESTUCA ARUNDINACEA 'FINELAWN ELITE' 10% LOLIUM PERENNE 'WIZARD' 10% LOLIUM PERENNE 'PENNANT II'	SHENANDOAH II TALL FESCUE FINELAWN TALL FESCUE WIZARD PERENNIAL RYEGRASS PENNANT II PERENNIAL RYEGRASS			
CELL B: GARDEN BORDER	12,727	10% BUXUS 'GREEN GEM' 10% MISCANTHUS 'LITTLE GEM' 20% ROSE 'THE FAIRY' 20% GERANIUM 'ROZANNE' 20% PEROVSKIA SPP. 'RUSSIAN SAGE' 10% LEUCANTHEMUM SPP. 10% SAPONARIA OFFICINALIS 5% SEDUM SPIRUIUM	GREEN GEM BOXWOOD DWARF MAIDEN GRASS GROUNDCOVER ROSE GERANIUM RUSSIAN SAGE DWARF SHASTA DAISY SOAPWORT DRAGON'S BLOOD SEDUM	3 GAL 1 GAL 3 GAL 1 GAL 1 GAL 1 GAL 1 GAL 3.5' FOTS	18' 18' 2' 18' 18' 18' 18'	MAINTAIN BOXWOOD AS 18" HT. CLIPPED HEDGE AT BORDER
CELL B2: SWIM CLUB	3,002	30% RHUS AROMATIC 'GRO-LOW' 30% CLETHRA ALNIFOLIA 'HUMMINGBIRD' 30% CORNUS SERICEA 'FLAVIRAMEA' 10% CORNUS SERICEA 'CARDINAL'	GRO-LOW SUMAC HUMMINGBIRD SUMMERSHEET RED-OSIER DOGWOOD RED-OSIER DOGWOOD	1 GAL 5 GAL 5 GAL 5 GAL	6' 6' 6' 6'	
CELL C: NATIVE GRASS/WILDFLOWER NATURAL MEADOW SLOPE SEED MIX	44,676	20% LOLIUM MULTIFLORUM 20% ANDROPOGON SCOPARIUS 20% ELYMUS CANADENSIS 10% SPODOBOLUS ASPER 10% BROMUS CILIATUS 10% AGROSTIS PERENNANS 5% RUDBECKIA HIRTA 5% ASTER FRENANTHOIDES 2% SOLIDAGO NEMORALIS	ANNUAL RYEGRASS LITTLE BLUESTEM CANADA WILD RYE ROUGH DROPSEED FRINGED BROME AUTUMN BLUDEGRASS BLACK EYED SUSAN ZIGZAG ASTER GRAY GOLDENROD			
CELL D: CONDO GARDEN ZONE - PERIMETER AND BETWEEN BUILDINGS	33,134	20% NATIVE FERNS 10% HAMELIS VIRGINIANA 15% AMELANCHIER LAEVIS 15% AESCULUS PARVIFOLIA 15% ILEX VERTICILLATA 'WINTER RED' 15% RHODODENDRON MAXIMUM 'INDEPENDENCE' 20% ARCTOSTAPHYLOS UVA-URSI 'MASSACHUSETTS'	NATIVE FERNS WITCHHAZEL SERVICEBERRY BOTTLEBRUSH BUCKEYE WINTER RED WINTERBERRY HOLLY ROSEMARY RHODODENDRON MASSACHUSETTS' KINNICKINICK	3' 4' 4' 3' 4' 4' 1 GAL	5' T T 5' 5' 5'	MIX VARIETIES IN GROUPS OF 3, 5, 7; USE RHODODENDRON MAXIMUM IN 'SHELTERED SHADE CONDITIONS
CELL E: CONDO GARDEN ZONES - SOUTH AND WEST EXPOSURES	22,641	20% ARCTOSTAPHYLOS UVA-URSI 20% VIBURNUM TRILOBUM 'COMPACTUM' 20% SPIRAEA X BIMALDA 'DARTS RED' 10% CLETHRA ALNIFOLIA 'HUMMINGBIRD' 10% CORNUS ALBA 'RED GNOME' 10% ILEX GLABRA 'SHAMROCK' 10% MYRTICA PENNSYLVANICA	KINNICKINICK HIGH BUSH CRANBERRY DARTS RED SPIRAEA SWEET PEPPERBUSH RED GNOME' TATARIAN DOGWOOD INKBERRY NORTHERN BAYBERRY	6" POT 3 GAL 3 GAL 3 GAL 3 GAL 5 GAL 5 GAL	2' 4' 4' 4' 4' 4' 5'	USE INKBEERY AS FOUNDATION PLANTING AT CONDOS PATHS THAT RADIATE FROM OVAL; USE MYRTICA PENNSYLVANICA AT BASE OF SLOPE
CELL E2: CONDO GARDEN ZONES AND GOLF ACADEMY - NORTH AND EAST EXPOSURES	7,034	20% PACHYSANDRA TERMINALIS 20% KALMIA LATIFOLIA 'OLYMPIC FIRE' 20% LEUCOTHOE FONTANESIANA 'NANA' 15% HYDRANGEA QUERCIFOLIA 'FEE WEE' 15% RHODODENDRON P.M 10% ILEX GLABRA 'SHAMROCK'	PACHYSANDRA OLYMPIC FIRE MOUNTAIN LAUREL DWARF LEUCOTHOE DWARF OAKLEAF HYDRANGEA P.M RHODODENDRON INKBERRY	6" POT 3 GAL 3 GAL 3 GAL 3 GAL 3 GAL 5 GAL	2' 3' 3' 4' 4' 4' 4'	USE INKBEERY AND RHODODENDRON AS FOUNDATION PLANTING AT CONDOS; USE KALMIA IN PROTECTED PART SHADE LOCATIONS.
CELL F: GROUNDPLANE AT VILLAGE GREEN	41,345	RHUS GRO-LOW NATIVE FERNS MERTENSIA VIRGINICA BULBS	GRO-LOW SUMAC NATIVE FERNS BLUEBELLS BULBS	1 GAL 1 GAL LINERS BULB	6' AS REQ. BULB	INTERMITTENT SWATHS OF BULBS ALONG INNER-OVAL TREE LINE, MASSINGS OF BLUEBELLS IN OPEN AREAS ALONG PATHS THAT RADIATE FROM OVAL; FERNS AND SUMAC AS GROUND COVER THAT WILL FILL IN OVER TIME.
CELL G: PARKING SCREEN SHRUBS	11,352	15% PICEA GLAUCA 'CONICA' 40% VIBURNUM DENTATUM 'CHRISTOM' 30% ILEX VERTICILLATA 'AFTERSLOW' 15% KALMIA LATIFOLIA 'OLYMPIC FIRE'	DWARF WHITE SPRUCE BLUE MUFFIN VIBURNUM WINTERBERRY MOUNTAIN LAUREL	1 GAL 5 GAL 5 GAL 5 GAL	5' 4' 8' 4'	USE NATURAL (NOT CLIPPED) FORM FOR PICEA GLAUCA 'CONICA'; NOTE: MIX VARIETIES IN GROUPS OF 1-4 PLANTS; USE KALMIA IN PROTECTED PART SHADE LOCATIONS.
CELL H: FRONT OF CLUBHOUSE AT FOUNDATION	3,345	10% CORNUS KOUSA DWARF CULTIVAR 20% KALMIA LATIFOLIA 'SNOWDRIFT' 20% HYDRANGEA QUERCIFOLIA 'FEE WEE' 20% OSMUNDA REGALIS 20% SPIRAEA 'ANTHONY WATERER' 10% LIRIOPE SPICATA	DWARF KOUSA DOGWOOD SNOWDRIFT MOUNTAIN LAUREL 'FEE WEE' HYDRANGEA AMERICAN ROYAL FERN 'ANTHONY WATERER' SPIRAEA LILYTURF	5 GAL 1 GAL 1 GAL 1 GAL 1 GAL 1 GAL	5' 3' 3' 3' 4' 16'	USE KALMIA IN PROTECTED PART SHADE LOCATIONS.
CELL I: GOLF TRANSITION	45,365	45% MYRTICA PENNSYLVANICA 10% RHUS TYPHINA 'BALLTIGER' 25% RHUS AROMATICA GRO-LOW 10% RHODODENDRON MAXIMUM 10% VIBURNUM DENTATUM 'MOONCLOW' OR SIM.	NORTHERN BAYBERRY TIGER EYES' SUMAC FRAGRANT SUMAC GREAT LAUREL ARROWWOOD VIBURNUM	5 GAL 5 GAL 1 GAL 1 GAL 5 GAL	5' 8' 6' 10' 8'	LARGE MASSINGS OF BAYBERRY WITH ACCENT GROUPINGS OF SUMAC AND VIBURNUM IN 3, 5, OR 7 PLANTS
CELL J: CONDO AUTOCOURT PLANTING	3,805	RHUS GRO-LOW NATIVE FERNS	GRO-LOW SUMAC NATIVE FERNS	1 GAL 1 GAL	6' AS REQ.	
CELL K: GOLF ACADEMY SLOPE SHRUB MIX	11,683	AESCULUS PARVIFLORA CLETHRA ALNIFOLIA 'RUBY SPICE' MYRTICA PENNSYLVANICA RHUS AROMATICA GRO-LOW VIBURNUM TRILOBUM 'COMPACTUM' SPRING BULBS	BOTTLEBRUSH BUCKEYE SWEET PEPPERBUSH RUBY SPICE NORTHERN BAYBERRY GRO-LOW SUMAC HIGHBUSH CRANBERRY WHITE AND PURPLE BULBS	5 GAL 3 GAL 5 GAL 1 GAL 3 GAL BULB	8' 4' 5' 6' 3' AS REQ.	USE MID-SLOPE TO BOTTOM OF SLOPE USE MID-SLOPE TO TOP OF SLOPE USE LARGE SWATHS THROUGHOUT AS GROUND COVER USE NEAR TOP AND BOTTOM OF SLOPE
CELL M: HEDGE AT PRACTICE TEES	3,187	40% ILEX GLABRA 'SHAMROCK' 60% VIBURNUM TRILOBUM 'COMPACTUM'	SHAMROCK INKBEERRY HIGHBUSH CRANBERRY	5 GAL 5 GAL	4' 3'	
CELL N: STREAM RESTORATION MIX	22,758	CLETHRA ALNIFOLIA ILEX VERTICILLATA NATIVE FERN OSMUNDA REGALIS SPIRAEA LATIFOLIA VIBURNUM TRILOBUM	SWEET PEPPERBUSH WINTERBERRY NATIVE FERN ROYAL FERN MEADOWSWEET CRANBERRYBUSH VIBURNUM	3 GAL 5 GAL 1 GAL 1 GAL 3 GAL 3 GAL	4' 8' AS REQ. 3' 3' 3'	

NOT FOR CONSTRUCTION
 HART HOWERTON
 SILO RIDGE
 PHASE 1 SITE PLAN SUBMISSION
 Amenia, New York
 Dutchess County
 PROJECT #:
 13-507
 DRAWN BY:
 12
 CHECKED BY:
 SIB
 DRAWING NO:
 L3.21

J:\Projects\13-507 - Amenia Inn and Cottages\13-507 CAD\Sheet\13-507-13-10 Planting Schedule.dwg - Page Setup: new, 11/16/13, Plot Scale: 1:1, 1/16" PRINTY Canon R2300 300 PCL5

AMENITY AREAS - PLANT MIXES

MIX NAME	TOTAL SQ. FT.	BOTANICAL NAME	COMMON NAME	SPEC. SIZE	SPACING	NOTES
INFORMAL HEDGE @ ACTIVITY BARN POOL FENCE	4222	HYPERICUM KALMIANUM 'AMES'	KALM'S ST. JOHN'S WORT	3 GAL	2'-6"	USE AT TOP OF SLOPE AT POOL TERRACE EDGE
FORMAL EVERGREEN HEDGE (TALL)	6240	AESCULUS PARVIFLORA	BOTTLEBRUSH BUCKEYE	4'	8'	USE MID-SLOPE TO TOE OF SLOPE
FORMAL EVERGREEN HEDGE (SHORT)	4164	THUJA OCCIDENTALIS 'BRANDON' OR SIM.	BRANDON'S ARBORVITAE OR SIM.	5'	4' T.B.C. W/FINAL SELECTION	MAINTAIN AS CLIPPED HEDGE; 4' HT. AT ACTIVITY BARN AND SALES CENTER, 6' HT. AT VILLAGE CORE
ORNAMENTAL LAYERED PLANTING AREA SHRUB/GROUND COVER MIX @ ACTIVITY BARN	7073	AMELANCHIER CANADENSIS 'PRINCE WILLIAM'	SERVICE BERRY	5 GAL	10'	USE AS FOCAL ACCENT
		CLETHRA ALNIFOLIA	SUMMER SHEET	5 GAL	5'	MASSINGS OF 1-4 PLANTS
		HELLEBORUS	HELLEBORUS			USE AS GROUND COVER IN SHADY AREAS
		HYDRANGEA ARBORESCENS	HYDRANGEA	5 GAL	4'	USE IN FOCAL AREAS WITHIN POOL GATE ONLY
		ILEX GLABRA 'SHAMROCK'	INKBERRY	5 GAL	3'	USE AT BUILDING FOUNDATION
		LIRIOPE	LIRIOPE			USE AS GROUND COVER
		SPIRAEA X BUMALDA 'DART'S RED'	DART'S RED SPIRAEA	5 GAL	3'	MASSINGS OF 1-4 PLANTS
		NATIVE FERNS	NATIVE FERNS			
LAWN SEED MIX	208641	AGROSTIS PERENNANS	AUTUMN BENT GRASS			NATIVE, CHOSEN FOR LOW HEIGHT, MINIMAL MOWING REQUIRED
		FESTUCA RUBRA	CREeping RED FESCUE			CHOSEN FOR LOW HEIGHT, MINIMAL MOWING REQUIRED
		FESTUCA OVINA	SHEEP FESCUE			CHOSEN FOR LOW HEIGHT, MINIMAL MOWING REQUIRED
GRASSY SLOPE - 3' HT MIX OF MEADOW GRASSES	26745	SCHIZACHYRIUM SCOPARUM	LITTLE BLUESTEM			
		ELYMUS VIRGINICUS	VIRGINIA WILD RYE			
		SORGHASTRUM NUTANS	INDIAN GRASS			
		FESTUCA RUBRA	CREeping RED FESCUE			
		PANICUM VIRGATUM	SWITCH GRASS			
COURT YARD PLANTING	256	SEASONAL PLANTINGS				ROTATE PLANTINGS FOR SEASONAL INTEREST
TENNIS COURT SCREEN SHRUB MIX	6422	20% NATIVE FERNS	NATIVE FERNS	6" POT	18"	PLANT IN SHADY AREAS - FOREGROUND
		30% MYRICA PENNSYLVANICA	NORTHERN BAYBERRY	5 GAL	5'	MID-GROUND; MASSING OF 7-15 PLANTS
		30% VIBURNUM NUDUM 'WINTERTHUR'	WITHERED VIBURNUM	5 GAL	5'	MID-GROUND; INCLUDE A PERCENTAGE OF V. NUDUM 'BRANDYHINE' TO ACT AS A POLLINATOR
		20% VIBURNUM TRILOBUM	HIGH-BUSH CRANBERRY	1 GAL	8'	BACKGROUND MASSING
3' HT SHRUB MIX @ MAINTENANCE FACILITY	1510	33% ILEX GLABRA 'DENSEA'	INKBERRY	3 GAL	4'	
		33% CLETHRA ALNIFOLIA 'CRYSTALINA'	SUGARTINE SWEET PEPPERBUSH (DWARF)	3 GAL	3'	OR SPIREA TOMENTOSA OR APPROVED ALTERNATE
		33% POTENTILLA FRUTICOSA 'TANGERINE'	SHRUBBY CINQUEFOIL	3 GAL	2'	
SHRUB MIX @ MAINTENANCE FACILITY, SALES CENTER, AND ACTIVITY BARN	56491	15% AMELANCHIER CANADENSIS 'PRINCE WILLIAM'	PRINCE WILLIAM SERVICEBERRY	1 GAL	8'	BACKGROUND MASSING OF 3-7 PLANTS
		20% FOTHERGILLA 'MT. AIRY'	DWARF FOTHERGILLA	1 GAL	5'	MASSING OF 5-7 PLANTS
		40% MYRICA PENNSYLVANICA	NORTHERN BAYBERRY	5 GAL	5'	MASSING OF 7-12 PLANTS
		25% VIBURNUM DENTATUM 'BLUE MUFFIN'	ARROWWOOD	5 GAL	4'	PLANT POLLINATOR VIBURNUM DENTATUM PER NURSERY RECOMMENDATIONS
COLORFUL MIX OF NATIVE FLOWERS	4231	FORBS: PHLOX DIVARICATA 'BLUE MOON', MONARDA DIDYMA 'JACOB CLINE', GERANIUM MACULATUM PURPLE AND OTHER RED AND PURPLE NATIVE FLOWERS FOR MULTI-SEASON INTEREST. PLANT 'SEEDUM TERNATUM 'LAKNEIM PINK' AT EDGE OF STONE PAVING				AT ARTISAN'S OVERLOOK. GRASS SEED MIX TO MATCH P-3. SEE HMP. FORBS AS DESCRIBED AT LEFT
SHRUB MIX @ MAIN GOLF CLUBHOUSE STAIRS (PART SHADE)	425	BUXUS X 'GREEN MOUNTAIN'	GREEN MOUNTAIN BOXWOOD	5 GAL	4'	PLANT IN FRONT OF BEDROOM
		CORNUS SERICEA 'KELSEY'	KELSEY'S DWARF RED-OSIER DOGWOOD	3 GAL	3'	
		LEUCOTOE FONTANESIANA 'NANA'	DWARF FETTERBUSH	3 GAL	3'	
		NATIVE FERN	NATIVE FERN	1 GAL	AS REQ.	
		PIERIS JAPONICA	JAPANESE PIERIS	3 GAL	3'	

OPEN SPACE PLANT MIXES

MIX NAME	TOTAL SQ. FT.	BOTANICAL NAME	COMMON NAME	SPEC. SIZE	SPACING	NOTES
SCREEN SHRUB MIX (SUN - PART SHADE)	10604	ARONIA ARBUTIFOLIA 'BRILLIANTISSIMA'	RED CHOKEBERRY	5 GAL	5'	MASSING OF 3, 5, OR 7 PLANTS, LOCATE BACK OF PLANT AREA
		CLETHRA ALNIFOLIA 'HUMMINGBIRD'	SUMMERSHEET	5 GAL	6'	OR APPROVED DEER RESISTANT ALTERNATE
		MYRICA PENNSYLVANICA	NORTHERN BAYBERRY	5 GAL	5'	MASSING OF 7-15 PLANTS
		POTENTILLA FRUTICOSA 'CORONATION TRIUMPH'	SHRUBBY CINQUEFOIL	5 GAL	4'	LOCATE FRONT OF PLANT AREA
		RHUS AROMATIC 'GRO-LOW'	GRO-LOW SUMAC	1 GAL	6'	USE AS GROUND COVER IN FRONT OF PLANTINGS
		VIBURNUM LENTAGO	NANNYBERRY	5 GAL	10'	MASSING OF 3, 5, OR 7 PLANTS
FOREST EDGE SHRUB MIX (PART SHADE)	44654	CORNUS SERICEA 'BAILEY'	RED TWIG DOGWOOD	5 GAL	6'	
		ILEX VERTICILLATA	WINTER BERRY	5 GAL	10'	
		LINDERA BENZOIN	SPICEBUSH	5 GAL	8'	
		RHUS TYPHINA 'LACINIATA'	STAGHORN SUMAC	5 GAL	10'	
		SPIREA TOMENTOSA	STEEPLEBUSH	5 GAL	4'	
		VIBURNUM DENTATUM	ARROWWOOD	5 GAL	8'	

NOTE: PLANTING QUANTITIES ARE FOR REFERENCE ONLY. IT IS THE RESPONSIBILITY OF THE CONTRACTOR TO VERIFY ALL PLANT QUANTITIES FROM SYMBOLS/HATCHES SHOWN ON PLANTING PLANS. ANY SUBSTITUTIONS/ADDITIONS/SUBTRACTIONS OF PLANT MATERIAL IS TO BE APPROVED BY THE LANDSCAPE ARCHITECT IN WRITING ONLY. VERBAL SUBSTITUTIONS/ADDITIONS/SUBTRACTIONS ARE NOT ACCEPTABLE.

ABBREVIATIONS:
GAL. = GALLON
CALIF. = CALIFORNIA

ESTATE LOTS - SLOPE SHRUB MIX (PART SHADE)	55547	30% MYRICA PENNSYLVANICA	NORTHERN BAYBERRY	5 GAL	5'	FINAL PLANT MIX TO BE CONFIRMED AFTER EROSION CONTROL METHOD HAS BEEN CONFIRMED
		15% ILEX VERTICILLATA	WINTER BERRY	5 GAL	3'	
		10% NATIVE FERN	NATIVE FERN			
		30% RHODODENDRON MAXIMUM	GREAT LAUREL	7 GAL	10'	LOCATE ON ROAD SIDE OF FENCE
		15% VIBURNUM DENTATUM 'BLUE BLAZE'	SOUTHERN ARROWWOOD	5 GAL	5'	LOCATE DOWNSLOPE OF FENCE & MAINTAIN 4-6' HT. TO AVOID BLOCKING VIEWS FROM ROUTE 44
WETLAND (RIPARIAN FRINGE)	214,867	CORNUS AMOMUM	SWAMP DOGWOOD	5 GAL	8'	
SHRUB MIX		CORNUS RACEMOSA	GREY DOGWOOD	5 GAL	12'	
		ILEX VERTICILLATA	WINTER BERRY	5 GAL	10'	
		VACCINIUM ANGUSTIFOLIUM	LOWBUSH BLUEBERRY	3 GAL	2'	
		VACCINIUM CORYMBOSUM	HIGHBUSH BLUEBERRY	5 GAL	10'	
		VIBURNUM TRILOBUM	GRANBERRYBUSH VIBURNUM	5 GAL	8'	
SEED MIX - NEW ENGLAND WET MIX		CAREX COMOSA	BEARDED SEDGE			(WWW.NEWP.COM)
		CAREX LUPULINA	HOP SEDGE			
		CAREX LURIDA	LURID SEDGE			
		CAREX SCOPARIA	BLUNT BROOM SEDGE			
		CAREX VULPINOIDEA	FOX SEDGE			
		JUNCUS EFFUSUS	SOFT RUSH			
		SCIRPUS ATROVIRENS	GREEN BULRUSH			
		SCIRPUS CYPERINUS	WOOLGRASS			
		SCIRPUS VALIDUS	SOFT-STEM BULRUSH			
		ONOCLEA SENSIBILIS	SENSITIVE FERN			
		ASCLEPIAS INCARNATA	SWAMP MILK WEEED			
		ASTER UMBELLATUS	FLAT TOPPED ASTER			
		BIDENS CERNUA	NOODLING BURR MARIGOLD			
		EUPATORIUM MACULATUM	SPOTTED JOE PYE WEEED			
		IRIS VERSICOLOR	BLUE FLAG IRIS			
		LOBELIA CARDINALIS	CARDINAL FLOWER			
		MIMULUS RINGENS	MONKEY FLOWER			
		BERBERNA HASTATA	BLUE VERVAIN			
SHALLOW MARSH WET MEADOW SEED MIX - ERNST SEEDS RETENTION BASIN WILDLIFE MIX ERNXX-127 (WWW.ERNSTSEED.COM) - NATIVE SEDGES, RUSHES, FORBES AT POND/STREAM EDGES (PLUGS)	3,351	CAREX VULPINOIDEA	FOX SEDGE			
		CHAMANTHIUM LATIFOLIUM	RIVER OATS			
		ELYMUS VIRGINICUS	VIRGINIA WILDRYE			
		POA PALUSTRIS	FOWL BLUEGRASS			
		PANICUM CLANDESTINUM	DEERTONGUE			
		CAREX LURIDA	LURID SEDGE			
		SCIRPUS ATROVIRENS	GREEN BULRUSH			
		VERBERNA HASTATA	BLUE VERVAIN			
		JUNCUS EFFUSUS	SOFT RUSH			
		AGROSTIS PERENNANS	AUTUMN BENTGRASS			
		AGROSTIS SCABRA	TICKLEGRASS			
		SCIRPUS CYPERINUS	WOOLGRASS			
		ASTER PUNICEUS	PURPLESTEM ASTER			
		MIMULUS RINGENS	MONKEY FLOWER			
NATIVE ROADSIDE SEED MIX (SUN-PART SUN) - NEW ENGLAND ROADSIDE MATRIX UPLAND SEED MIX (WWW.ERNSTSEED.COM)	346868	ANDROPOGON GERARDII (G)	BIG BLUESTEM			SEEDING SHOULD OCCUR IN SPRING OR SUMMER ONLY. MIX CONTAINS NATIVE GRASSES, WILDFLOWERS AND SHRUBS. ALLOWING GRASSES TO DOMINATE IN AREAS THAT ARE MOWN FREQUENTLY (SWALES), WILDFLOWERS IN AREAS LESS FREQUENTLY MOWN, AND SHRUBS IN AREAS NEVER MOWN (SLOPES).
		ELYMUS VIRGINICUS (G)	VIRGINIA WILDRYE			
		FESTUCA RUBRA (G)	CREeping RED FESCUE			
		PANICUM VIRGATUM (G)	SWITCH GRASS			
		SCHIZACHYRIUM SCOPARUM (G)	LITTLE BLUESTEM			
		SORGHASTRUM NUTANS (G)	INDIAN GRASS			
		ASCLEPIAS TUBEROSA (W)	BUTTERFLY MILKWEED			
		ASTER NOVAE-ANGLIAE (W)	NEW ENGLAND ASTER			
		CHAMAECRISTA FASCICULATA (W)	PARTRIDGE PEA			
		LESPEDEZA CAPITATA (W)	ROUND-HEADED BUSH CLOVER			
		LUPINUS PERENNIS (W)	WILD BLUE LUPINE			
		SOLIDAGO JUNCEA (W)	EARLY GOLDENROD			
		VERBERNA URTICIFOLIA (W)	WHITE VERVAIN			
		ZIZIA AUREA (W)	GOLDEN ALEXANDERS			
		CORNUS RACEMOSA (S)	GREY DOGWOOD			
		RHUS TYPHINA (S)	STAGHORN SUMAC			
NATIVE ROADSIDE SEED MIX (SHADE-PART SHADE) ERNST SEEDS - PARTIALLY SHADED AREA ROAD SIDE MIX - ERNXX-140	326406	ELYMUS VIRGINICUS	VIRGINIA WILDRYE			WWW.ERNSTSEED.COM
		PANICUM CLANDESTINUM	DEERTONGUE			
		SCHIZACHYRIUM SCOPARUM	LITTLE BLUESTEM			
		CHAMAECRISTA FASCICULATA	PARTRIDGE PEA			
		RIDDECKIA HIRTA	BLACKKEYED SUSAN			
		LIATRIS SPICATA	MARSH BLAZING STAR			
		PENSTEMON DIGITALIS	TALL WHITE BEARDTONGUE			
		ZIZIA AUREA	GOLDEN ALEXANDERS			
		AGROSTIS PERENNANS	AUTUMN BENTGRASS			
		ANEMONE VIRGINIANA	THIMBLENEED			
		ASCLEPIAS SYRIACA	COMMON MILKWEED			
		ASTER CORDIFOLIUS	BLUE WOOD ASTER			
		ASTER FRENANTHOIDES	ZIGZAG ASTER			
		MONARDA MEDIA	PURPLE BERGAMOT			
		PENSTEMON LAEVIGATUS	APPALACHIAN BEARD TONGUE			
		ASTER MACROPHYLLUS	BIGLEAF ASTER			
		HELIOPSIS HELIANTHOIDES	OXEYE SUNFLOWER			
		SOLIDAGO BICOLOR	WHITE GOLDENROD			

NOT FOR CONSTRUCTION
 SILO RIDGE
 PHASE 1 SITE PLAN SUBMISSION
 Ardenia, New York
 Dutchess County

HART HOWERTON
 10 Erie Ave., Suite 200, New York, NY 10016
 TEL: 212.683.5431 FAX: 212.481.1748
 Email: NY@hart-howerton.com

DATE: 03/09/2014
 ISSUE: 03/09/2014
 REVISION #1: 04/22/2014
 REVISION #2: 01/09/2015
 REVISION #3: 01/08/2015

PROJECT #: 13-507
 DRAWN BY: JZ
 CHECKED BY: SIB
 DRAWING NO: L3.22